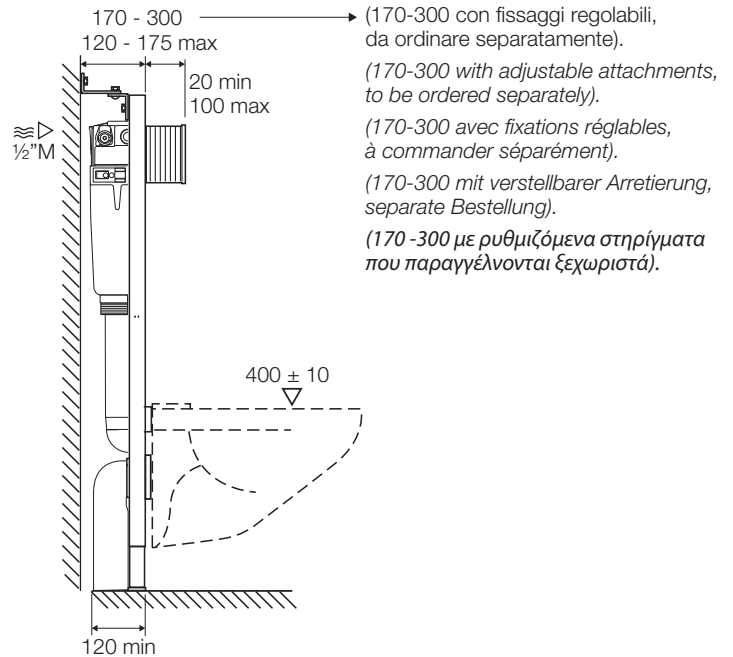
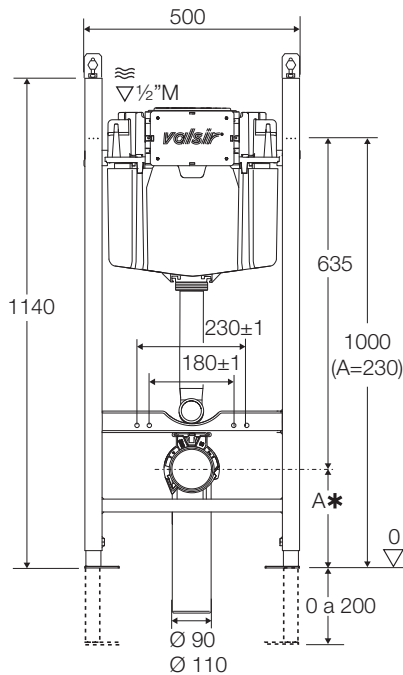


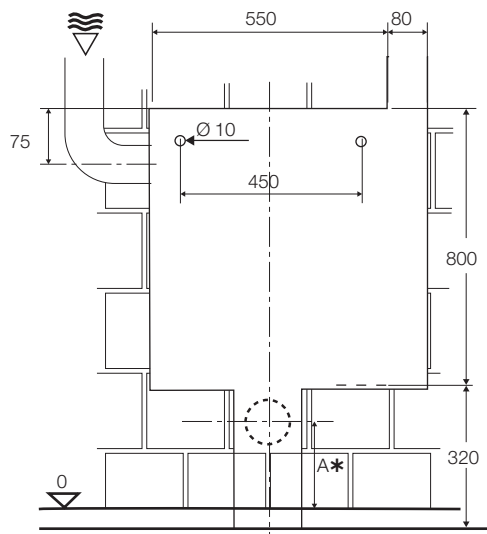
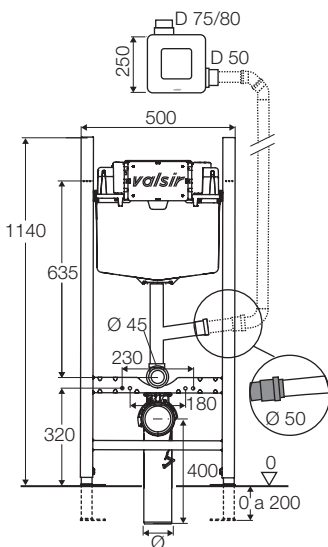
## WINNERS BLOCK H 1140



(170-300 con fissaggi regolabili, da ordinare separatamente).  
(170-300 with adjustable attachments, to be ordered separately).  
(170-300 avec fixations réglables, à commander séparément).  
(170-300 mit verstellbarer Arretierung, separate Bestellung).  
(170-300 με ρυθμιζόμενα στηρίγματα που παραγγέλλονται ξεχωριστά).

\* Controllare le quote di installazione del WC. - Verify the installation measurements of the WC. - Contrôler les côtes de l'installation du WC.  
Bitte überprüfen Sie die Einbaumaße der Toilette. - Ελέγξτε τις διαστάσεις για την εγκατάσταση του WC.

## MOD. ARIAPUR80 - ARIAPUR100LED



\* Controllare le quote di installazione del WC.  
Verify the installation measurements of the WC.  
Contrôler les côtes de l'installation du WC.  
Bitte überprüfen Sie die Einbaumaße der Toilette.  
Ελέγξτε τις διαστάσεις για την εγκατάσταση του WC.

VALSIR garantisce un perfetto risciacquo solo su vasi omologati per la quantità d'acqua prevista dalla cassetta.  
VALSIR guarantees a perfect flush only on test-proven pans with suitable capacity.

VALSIR garantit un parfait rinçage sur des cuvettes homologuées et pour la quantité d'eau préconisée.

VALSIR garantiert eine sehr gute Spülung nur auf WC, die eine angemessene Fassung vermögen.

Η VALSIR εξασφαλίζει την άριστη εκκένωση μόνο για λεκάνες που έχουν πιστοποίηση για την προβλεπόμενη από το καζανάκι ποσότητα νερού.



Sistema a murare.  
Built-in system.  
Système a encastrer.  
Einbausystem.  
Σύστημα εντοιχισμού.



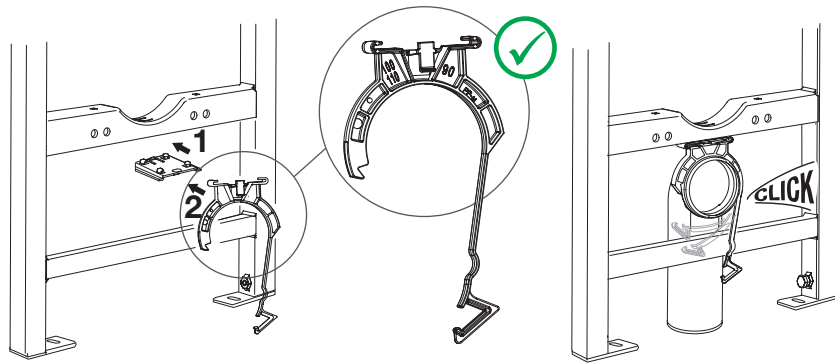
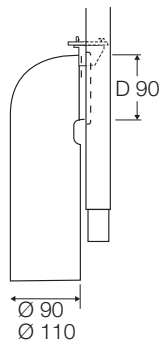
Sistema a pareti leggere (legno o cartongesso).  
System for light walls (wood or drywalls).  
Système pour parois légères (bois ou plaques de plâtre).  
System mit Leichtbauwänden (Holz oder Gipskarton).  
Σύστημα στήριξης για ελαφρά τοιχεία (ξύλο ή γυψοσανίδα).



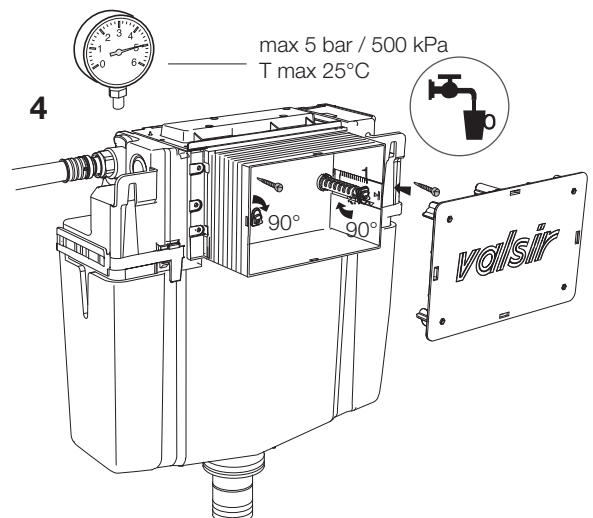
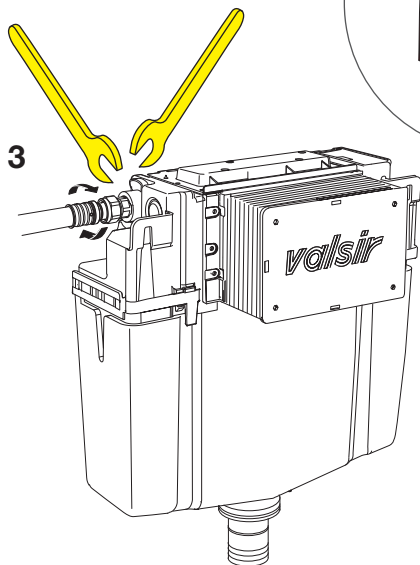
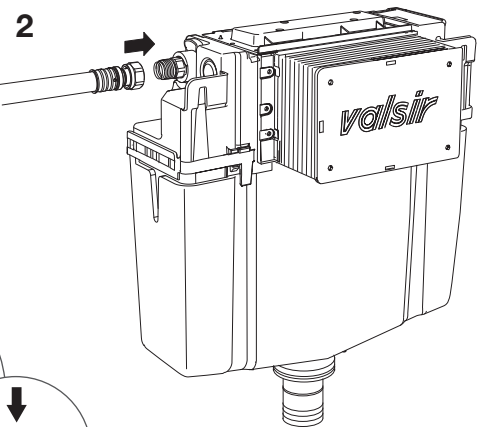
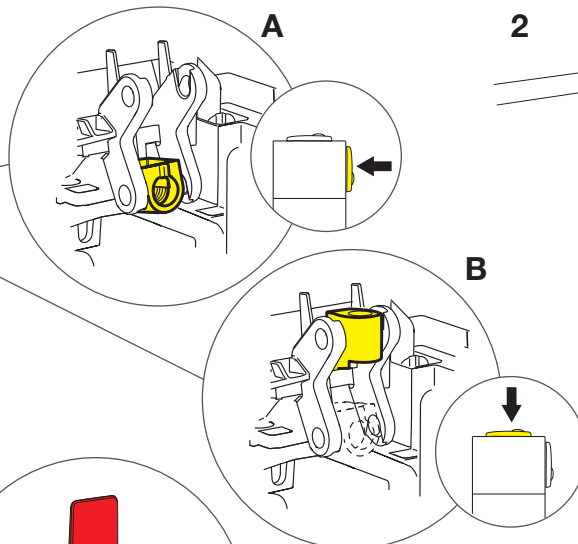
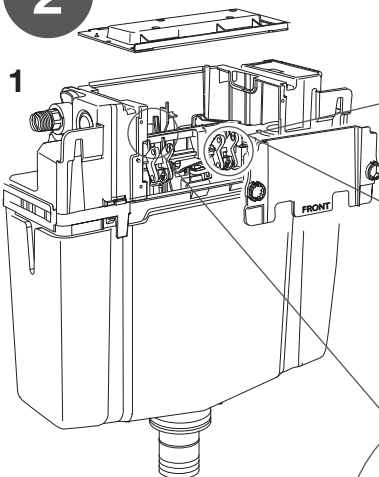
Sistema con rivestimento a secco.  
System with dry walls.  
Système avec paroi sèche.  
System mit Trockenverkleidung.  
Σύστημα με επικάλυψη σοβά.

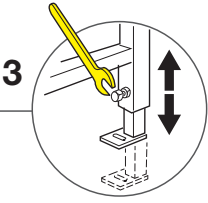
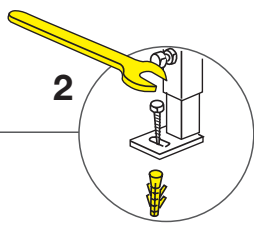
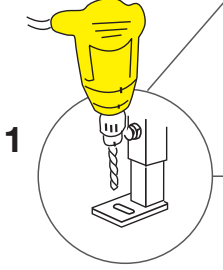
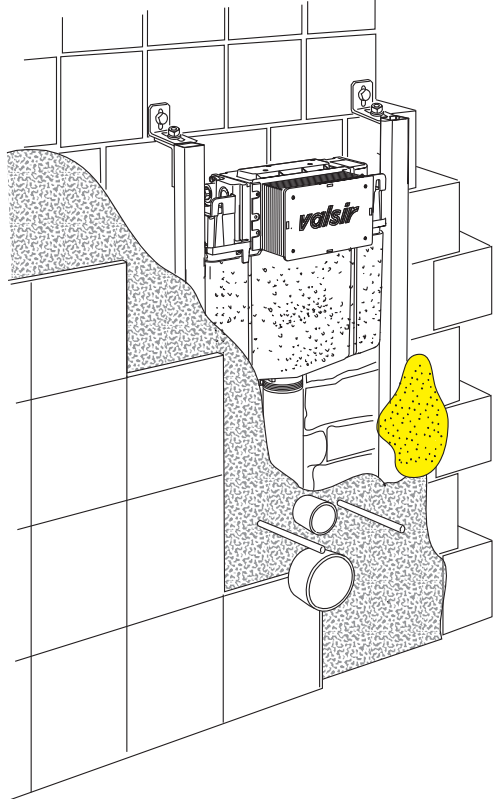
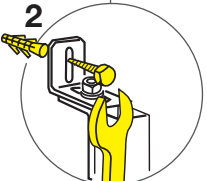
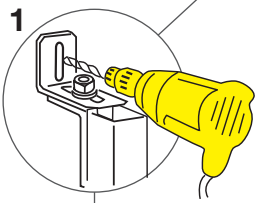
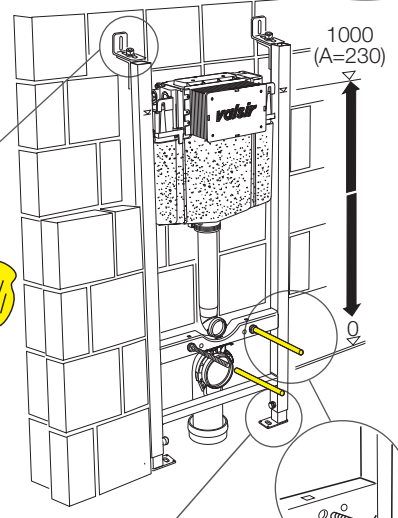
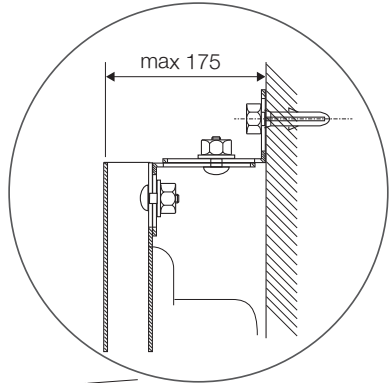
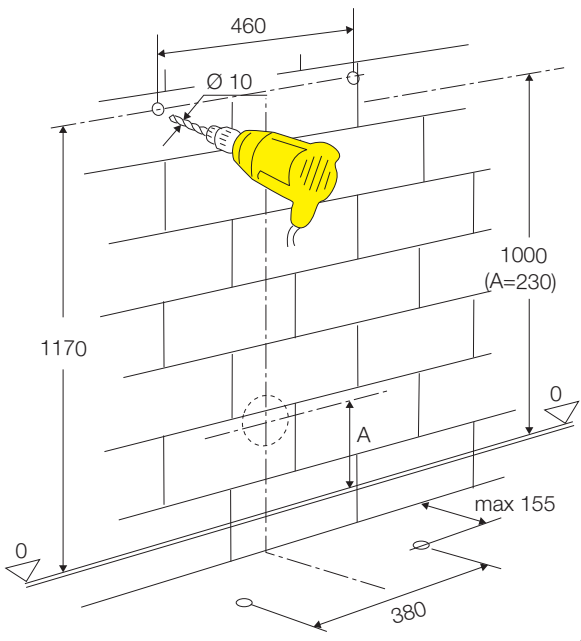
## MONTAGGIO - ASSEMBLY - MONTAGE - MONTAGE - ΣΥΝΑΡΜΟΛΟΓΗΣΗ

1

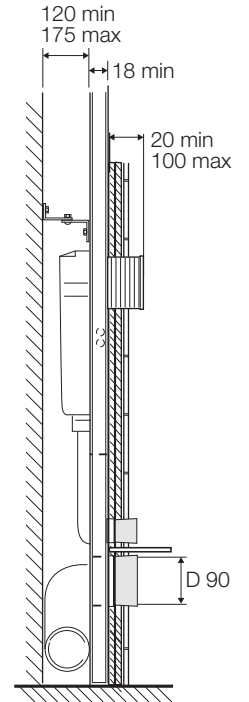
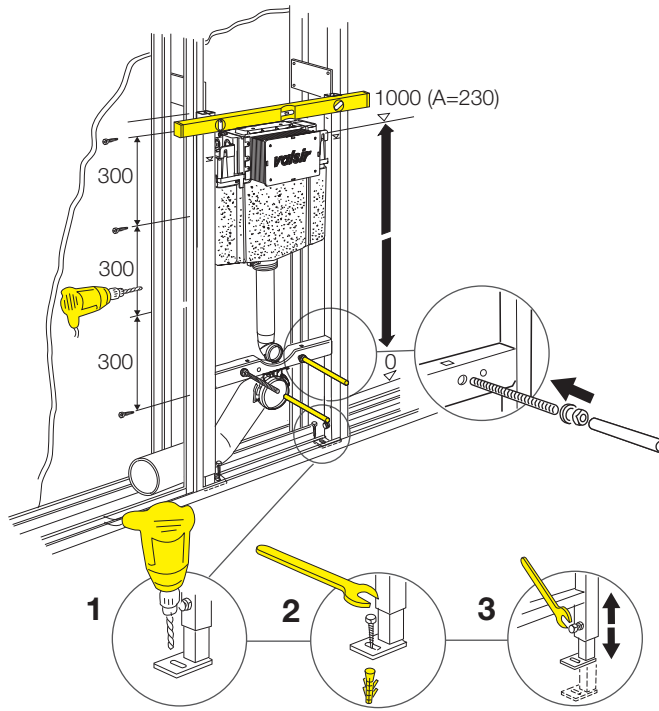
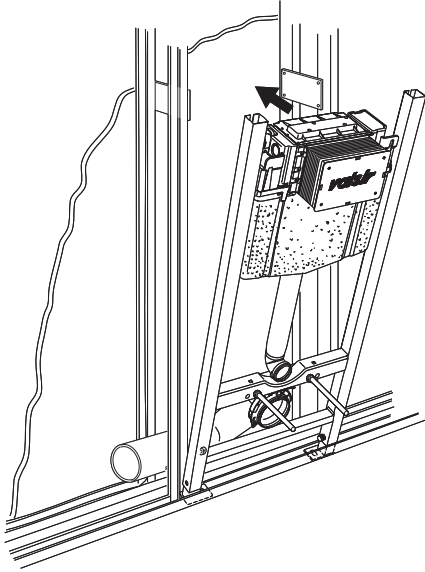


2

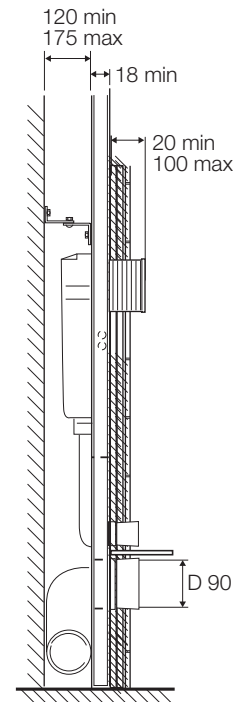
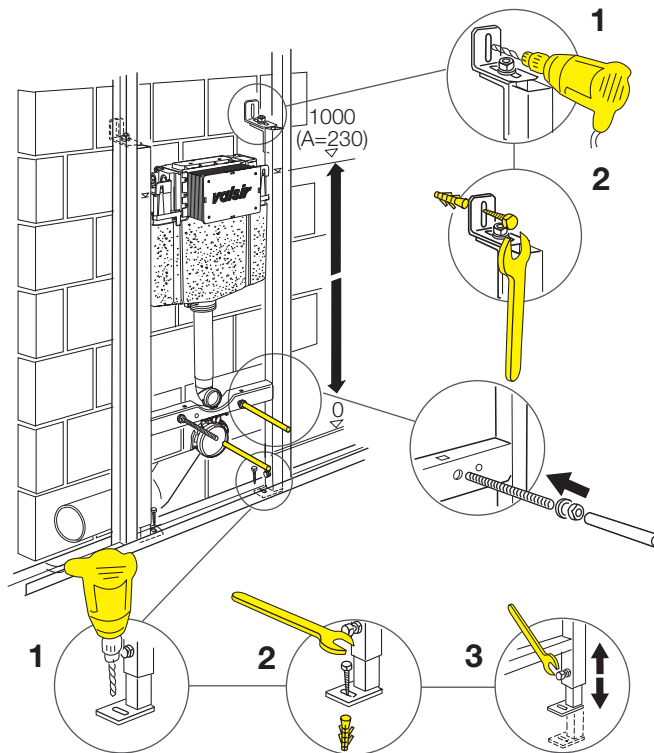
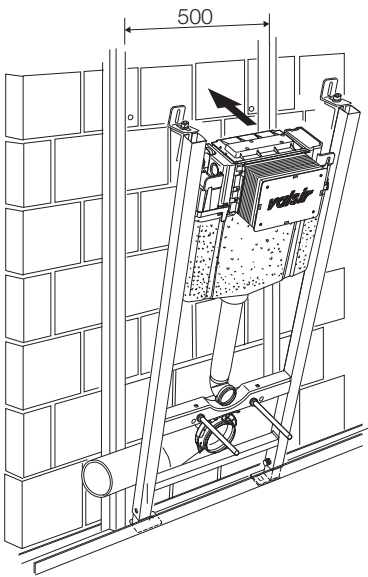




3



3



PDF - Regolazione litri  
PDF - Liter setting



<http://www.valsir.it/u/liter-regulation>

**VALSIR S.p.A.** - Società a Socio Unico  
Località Merlaro, 2 - 25078 Vestone (BS) - Italy  
Tel. +39 0365 877.011 - Fax +39 0365 81.268  
e-mail: assistenza@valsir.it  
[www.valsir.it](http://www.valsir.it)

Soggetta all'attività di direzione e coordinamento ex art. 2497 bis C.C. da parte di Silmar Group S.p.A. - Codice Fiscale 02075160172

Video Winner S



**valsir**<sup>®</sup>  
QUALITY FOR PLUMBING

Cod. A869570/04 - 09/2019