

# REMER

RUBINETTERIE

SERIE  
SERIES

## COMPONENTI DOCCIA SHOWER COMPONENTS

CODICE  
CODE

### 337X

#### IMMAGINE - IMAGE

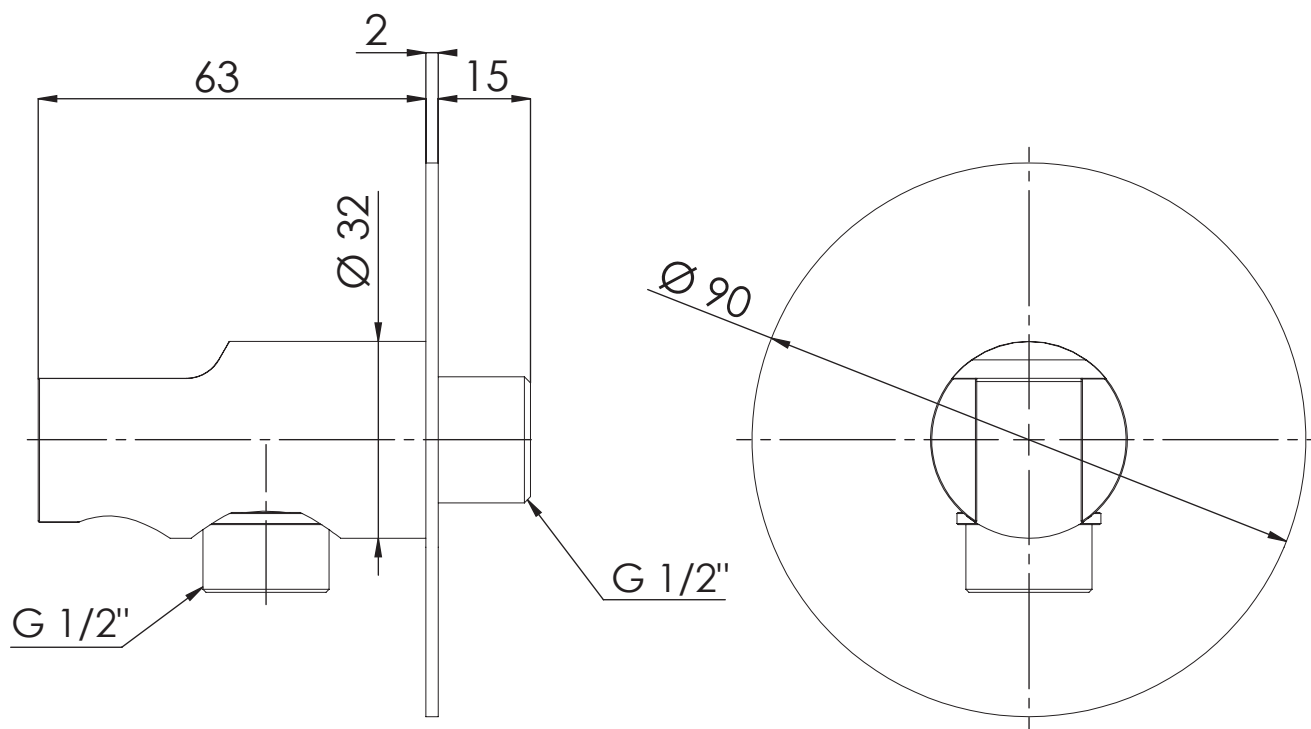


#### DESCRIZIONE - DESCRIPTION

Presa acqua e supporto lusso minimale in ottone ad incasso, con rosone ultrapiatto per flessibile con attacco conico.

Water punch and minimal shower holder in brass with ultraflat flange, for built-in and conical nut flexible hose.

#### SCHEDA TECNICA - TECHNICAL FEATURES


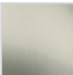


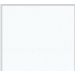

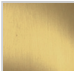



#### CARATTERISTICHE - FEATURES



Disponibile in Finitura  
Available in Finishing

#### FINITURE - FINISHING

 <b>NO</b> Nero Opaco Matt Black	 <b>NP</b> Nichel Spazzolato Brushed Nickel	 <b>DO</b> Oro Lucido Shiny Gold	 <b>CFP</b> Cromo Nero Spazzolato Brushed Black Chrome
 <b>BO</b> Bianco Opaco Matt White	 <b>NPO</b> Nichel Spazzolato Opaco Matt Brushed Nickel	 <b>BG</b> Oro Spazzolato Brushed Gold	 <b>CR</b> Cromo Chrome

REMER Rubinetterie S.p.A.

Via Leonardo Da Vinci, 83 - 20062 Cassano d'Adda (MI) - Italy - Tel. +39 0363 364211 - info@remer.eu - www.remer.eu