

# E-compact instant water heater CDX-U



## Application areas

Single point supply:

- > Kitchen sink
- > Washbasin
- > Double washbasin



# E-compact instant water heater CDX-U



	Energy efficiency class <b>A</b>	CDX7-U	CDX11-U
Part number:		2400-26107	2400-26113
Type:		closed-outlet	
Maximum operating pressure [MPa (bar)]:		1 (10)	
Water connections (thread connections):		G 3/8"	
User set temperature [°C]:		Factory set: 50 (internally adjustable between 30 and 60)	
Hot water output at $\Delta t = 33\text{K}^{1) 2)}$ [l/min]:		3.0	4.8
Switch-on flow rate / max. flow rate <sup>3)</sup> [l/min]:		2 / 4	2 / 5
Nominal power rating [kW]:		6.9	11.0
Supply voltage:		3~ / PE 400 V AC	
Nominal current <sup>2)</sup> [A]:		10	16
Required cable diameter [mm <sup>2</sup> ]:		1.0	1.5
Bare wire heating system IES <sup>®</sup> :		✓	
VDE approved / Protection class:		✓ / IP 24	
Specific water resistance at 15 °C [ $\Omega\text{cm}$ ] $\geq$ :		1000	
Nominal volume [litres]:		0.3	
Weight filled with water [kg]:		approx. 2.7	
Dimensions (height × width × depth) [cm]:		29.4 × 17.7 × 10.8	

1) Temperature increase e.g. from 12 °C to 45 °C 2) Mixed water 3) Limited flow amount for optimal temperature increase

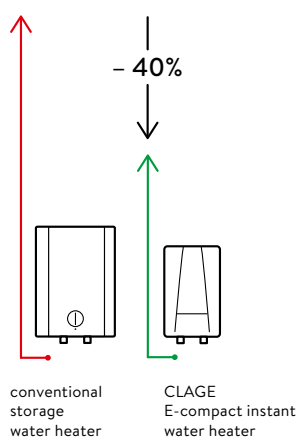
## Description

- > Electronically controlled instant water heater (undersink model) with compact design and without user controls
- > Automatic heating adjustment base on flow rate and inlet temperature
- > The maximum outlet temperature is factory-set to 50 °C, temperature setting as usual by mixing cold water at the tap
- > Easy installation under the kitchen sink facilitated by small dimensions and external 3/8 inch water connectors
- > With power cable for 3-phase power supply
- > The efficient IES<sup>®</sup> bare wire heating system reduces lime scale deposits and provides an extended service life
- > Connection Kit (T-piece and flexible connecting hose) for an angle valve is included

## Profitability comparison: (Source: www.clage.com)

### Saves up to 40 % energy compared to conventional storage heaters.

The E-compact instant water heater features an economical operation. The water is heated directly as it flows through the unit. Hot water is not stored in a tank, which saves standby energy that would be otherwise required.



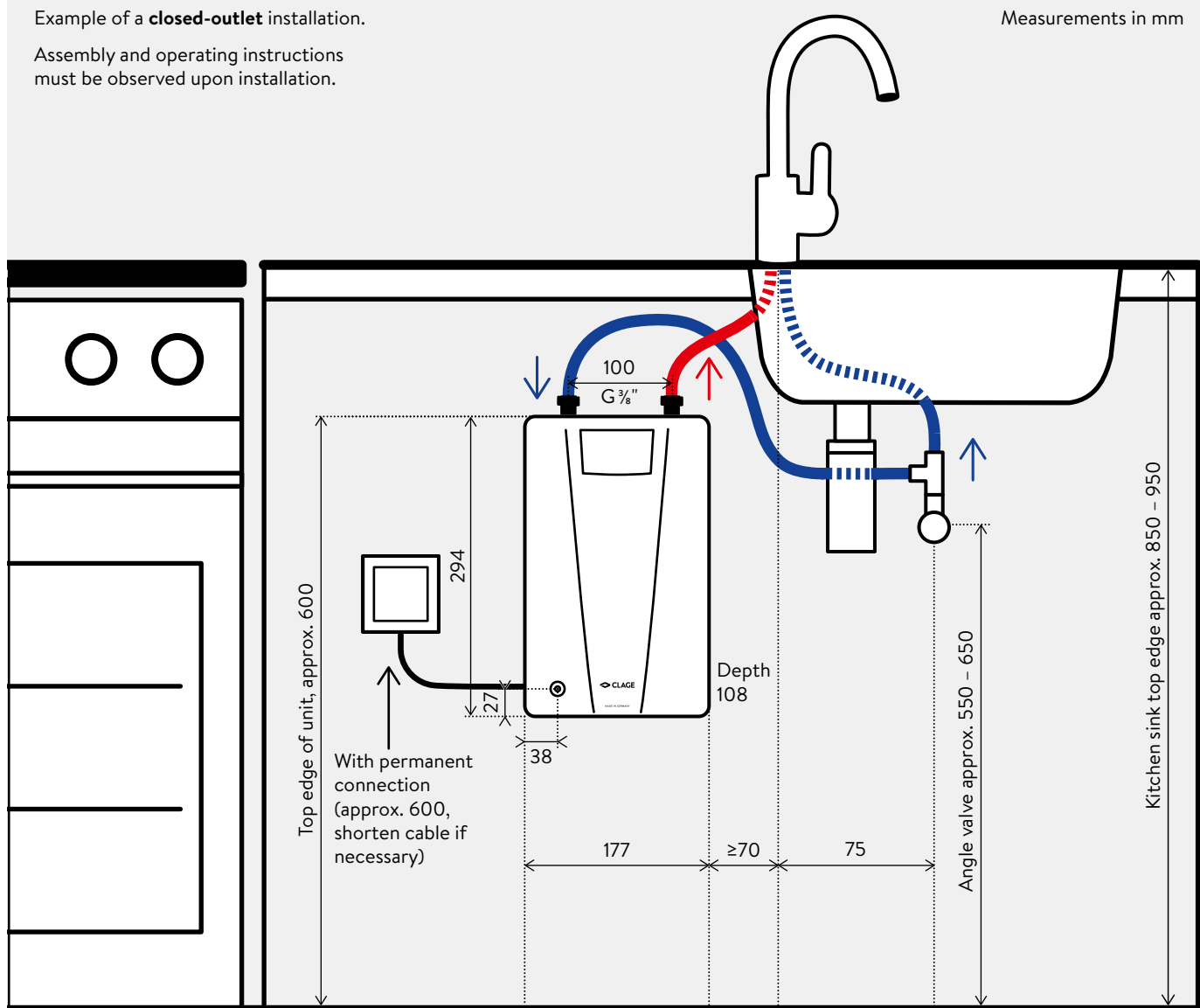
# E-compact instant water heater CDX-U



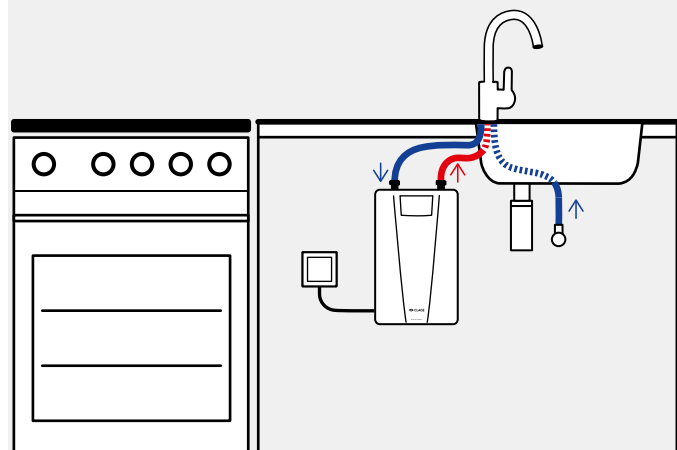
Example of a **closed-outlet** installation.

Assembly and operating instructions must be observed upon installation.

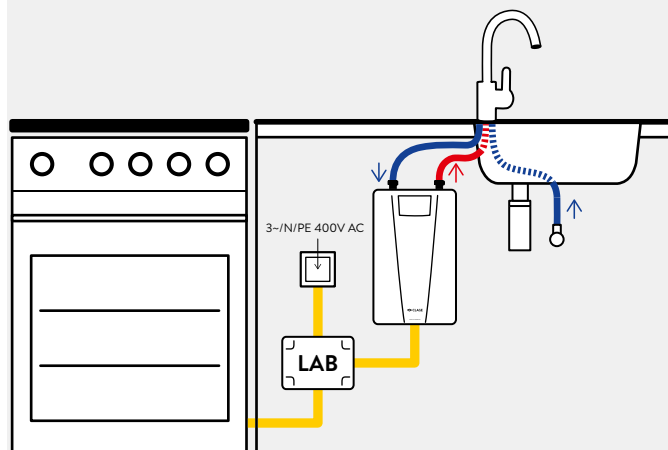
Measurements in mm



Alternative: **open-outlet** installation



Electrical connection with **load shedding switch LAB** at only one existing 400 Volt cooker terminal outlet box, if no separate outlet is available for the instant water heater.



# E-compact instant water heater CDX-U Accessories



## Accessory for undersink installation (included)



### FVS

Flexible connecting hose  $\frac{3}{8}$  inch cap nut  $\times$   $\frac{3}{8}$  inch cap nut, 50 cm long  
Part no. 89620

### T-piece

Special T-connector  $\frac{3}{8}$  inch cap nut  $\times$   $\frac{3}{8}$  inch angle valve 10 mm  
Part no. 89610



### LAB (optional)

Load shedding module (electrical installation kit) with pre-installed cables, contactor and load shedding relay, for joint connection of an 11 kW instant water heater and an electromechanical cooker at a cooker terminal outlet box, if no separate outlet is available for the instant water heater. IP 55. Dimensions (H  $\times$  W  $\times$  D): 17  $\times$  13  $\times$  8 cm

**LAB:** Part no. 82260



## Recommended accessories for kitchen application (optional)

### EAK

Single-lever mixer tap with side lever and swivel spout 20 cm  
**EAK:** Part no. 1100-04430



## Recommended accessories for kitchen application (optional)

### EWT / EWT-C

Single-lever mixer tap

**EWT (vented):** Part no. 1100-04420

**EWT-C (unvented):** Part no. 1100-04421



**Aerator CSP 6, CSP 6a and CSP 6i (optional)**

The aerator at the tap supports the energy- and water-saving operation of the compact instant water heater. The new special CSP aerators mix air into the water and thus create a uniform water stream that does not splatter but softly cascades down.

- > Aerator insert for tap adapter M 22/24 at the tap  
**CSP 6 (< 3.5l / min):** Part no. 0010-00461
- > Aerator with chrome tap adapter M 24a  
**CSP 6a:** Part no. 0010-0047
- > Aerator with chrome tap adapter M 22i  
**CSP 6i:** Part no. 0010-0046