

Multiplex Trio F drain/overflow functional unit

Instructions for Use



for water inlet through the drain unit

Model
6145.5

Year built:
from 06/2015

en_INT

viega

Table of contents

1	About these instructions for use	4
1.1	Target groups	4
1.2	Labelling of notes	4
1.3	About this translated version	5
2	Product information	6
2.1	Intended use	6
2.1.1	Areas of use	6
2.2	Product description	6
2.2.1	Overview	6
2.2.2	Technical data	8
2.3	Accessories	8
3	Handling	9
3.1	Assembly information	9
3.1.1	Mounting conditions	9
3.1.2	Installation dimensions	11
3.1.3	Required tools and materials	11
3.2	Assembly	12
3.2.1	Connect and mount pipe interrupter	12
3.2.2	Mounting overflow	14
3.2.3	Mounting the drain	15
3.2.4	Connecting overflow and drain	16
3.2.5	Connecting the wastewater system	17
3.2.6	Connecting the inlet	18
3.2.7	Mounting equipment set	19
3.2.8	Leakage test	20
3.3	Control	20
3.4	Simple maintenance and cleaning pipe	21
3.4.1	Maintenance	21
3.4.2	Cleaning pipe interrupter	22
3.4.3	Cleaning the drain	23
3.5	Disposal	25

1 About these instructions for use

Trade mark rights exist for this document, further information can be found at viega.com/legal.

1.1 Target groups

The information in this instruction manual is directed at the following groups of people:

- Heating and sanitary professionals and trained personnel
- Operators
- Consumers

It is not permitted for individuals without the abovementioned training or qualification to mount, install and, if required, service this product. This restriction does not extend to possible operating instructions.

The installation of Viega products must take place in accordance with the general rules of engineering and the Viega instructions for use.

1.2 Labelling of notes

Warning and advisory texts are set aside from the remainder of the text and are labelled with the relevant pictographs.



DANGER!

This symbol warns against possible life-threatening injury.



WARNING!

This symbol warns against possible serious injury.



CAUTION!

This symbol warns against possible injury.



NOTICE!

This symbol warns against possible damage to property.



Notes give you additional helpful tips.

1.3 About this translated version

This instruction for use contains important information about the choice of product or system, assembly and commissioning as well as intended use and, if required, maintenance measures. The information about the products, their properties and application technology are based on the current standards in Europe (e. g. EN) and/or in Germany (e. g. DIN/DVGW).

Some passages in the text may refer to technical codes in Europe/Germany. These should serve as recommendations in the absence of corresponding national regulations. The pertinent national laws, standards, regulations and guidelines, as well as other technical guidelines, have priority over German/European guidelines in this manual: The information is not binding for other countries and territories and should, as mentioned, be considered as support.

2 Product information

2.1 Intended use

2.1.1 Areas of use



NOTICE!

Risk of damage due to unsuitable liquids.

To avoid damaging the drain, only introduce the following liquids:

- Liquids with a pH-value higher than 4
- typical household wastewater with temperatures up to 95 °C

The Multiplex Trio drain/overflow is a combined inlet, drain and overflow with odour trap for bathtubs with a 52 mm drain hole. The inlet flows particularly quietly through the overflow opening.

The drain/overflow is suitable for bathtubs with a middle connection.

Detailed information regarding all bathtub models and the corresponding Viega drains / overflows can be found in the catalogue or on the Internet.

2.2 Product description

2.2.1 Overview

The following components are included in the scope of delivery of the Multiplex Trio F drain / overflow:

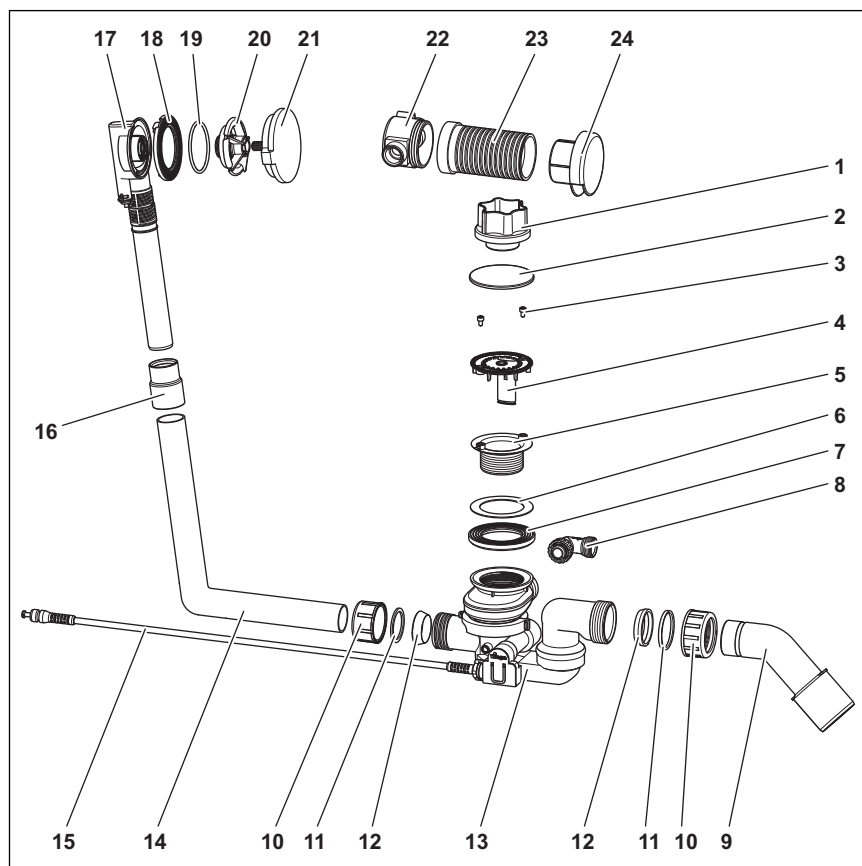


Fig. 1: Component overview

- 1 - mounting aid
- 2 - cover plate
- 3 - fixing screws
- 4 - inlet element
- 5 - screw-in valve (1 x 22.5 mm, 1 x 30 mm)
- 6 - seal
- 7 - profile seal
- 8 - connection elbow
- 9 - drain elbow
- 10 - union nut
- 11 - sliding ring
- 12 - seal
- 13 - drain unit with odour trap
- 14 - overflow pipe
- 15 - Bowden cable
- 16 - sleeve
- 17 - overflow unit
- 18 - profile seal
- 19 - O-ring
- 20 - fixing flange
- 21 - rotatable rosette
- 22 - pipe interrupter casing
- 23 - top of the pipe interrupter
- 24 - pipe interrupter rosette

2.2.2 Technical data

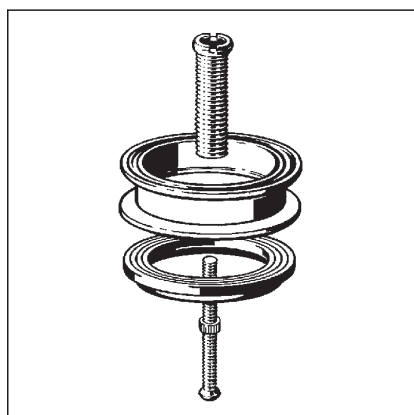
Drainage capacity (at an accumulation height of 300 mm)	0.85 l/s
Overflow capacity (at an accumulation height of 60 mm)	0.63 l/s
Inlet capacity (at 0.25 MPa (2.5 bar))	20 l/min
Diameter of bathtub drain hole	52 mm
DN (nominal diameter) drain socket	40 / 50 mm
Length of Bowden cable	725 mm
Length	130–370 mm
Height	180–480 mm
Dimensions and installation depth	☞ Chapter 3.1.2 „Installation dimensions“ on page 11
Water seal level	50 mm

2.3 Accessories



The accessories shown here are not included in the scope of delivery. If required, it must be purchased separately.

Optional accessories



Multiplex extension set

It is possible to extend the odour trap below the bathtub in the case of bathtubs with a very thick floor. The extension set, model 6161.7, is available for such cases.

3 Handling

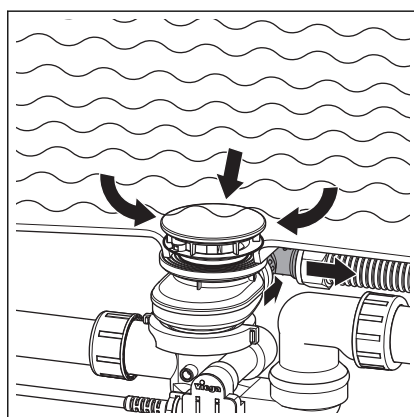
3.1 Assembly information

3.1.1 Mounting conditions

The following requirements exist for the mounting of the drain / overflow:

- The bathtub is installed.
- The drainage line is installed all the way to the bathtub.
- The underside of the bathtub is accessible.

Pipe interrupter



Backflow situation: If a negative pressure situation should occur when the bathtub is filled, there is a possibility that bath water may flow back into the drinking water system.

To ensure that no bath water flows back into the drinking water system, a pipe interrupter must be installed in the pipeline between the shut-off fitting and the bathtub inlet.

The following schematic diagram shows what this should look like:

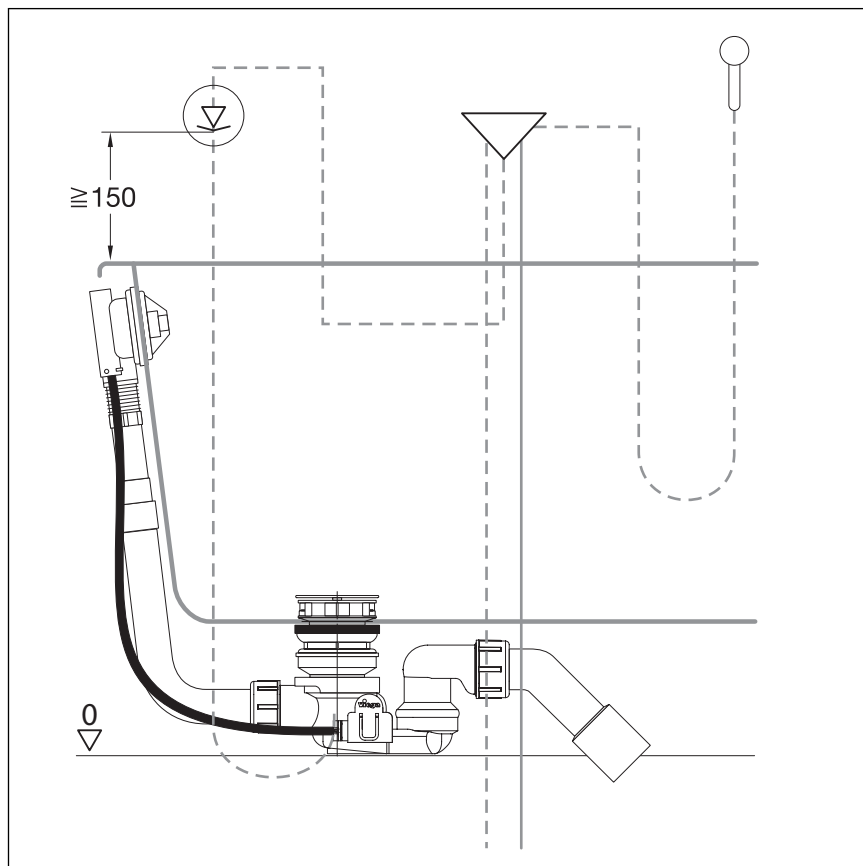


Fig. 2: Mounting scheme with pipe interrupter

It is important that the pipe interrupter is mounted vertically, in the direction of flow and at least 150 mm above the top edge of the bathtub.

Observe the local standards and regulations.

3.1.2 Installation dimensions

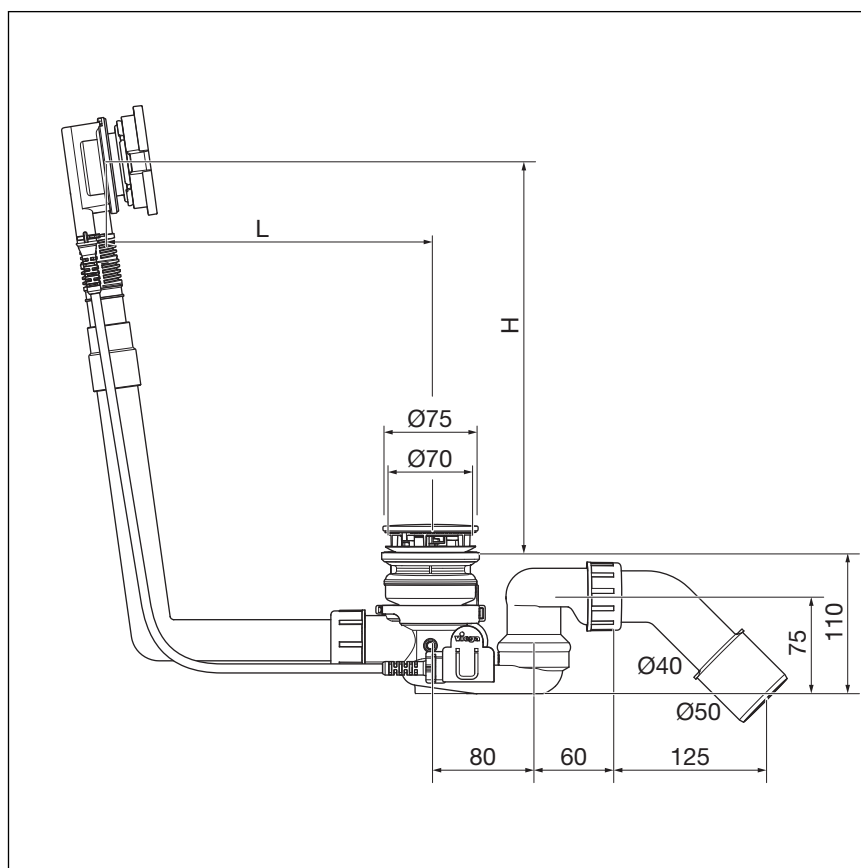


Fig. 3: Dimensional drawing

The following values are valid for L (length) and H (height):

L = 130–370

H = 180–370

3.1.3 Required tools and materials

Tool

The following tools are required for mounting:

- fine-toothed saw
- mounting aid (included in the scope of delivery)
- Allen key (SW 3)

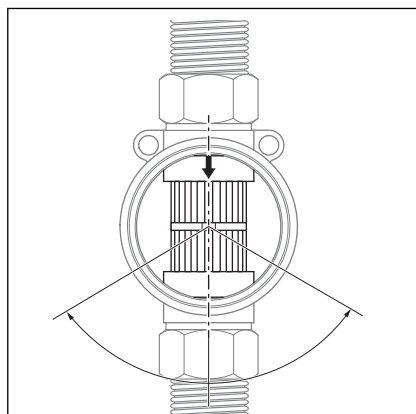
Material

No additional material is required for the complete mounting of the product.

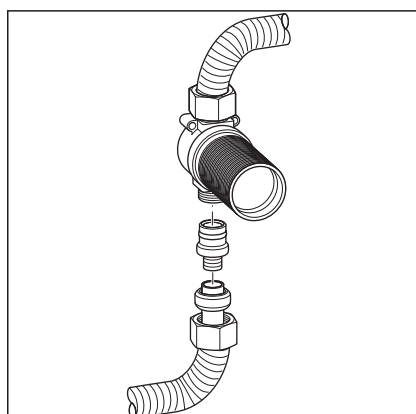
3.2 Assembly

3.2.1 Connect and mount pipe interrupter

The pipe interrupter must be mounted according to the plan in [Chapter 3.1.1 „Mounting conditions“ on page 9](#) for the subsequent installation of the bathtub before the work on the walls is finished. Proceed as follows:

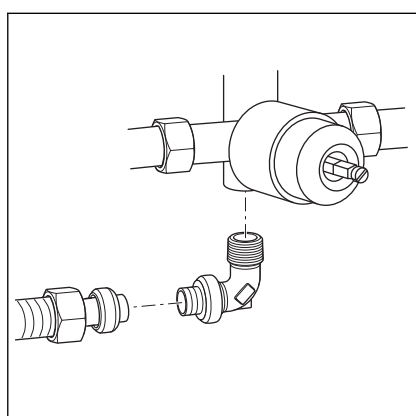


- The direction of flow runs from diagonal to vertical downwards.
- The line does not continue to rise downstream from the pipe interrupter.
- All of the accessories (pipes, connecting pieces $\frac{3}{4}$ inch) required for complete assembly are included.
- During assembly, the protective plug is to be found on the top stem.



INFO! We show the mounting here with the Viega plug connection. Mounting can also be carried out with other connecting materials. If necessary, observe the manufacturer's instructions.

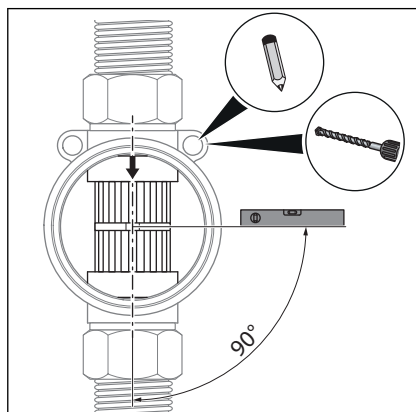
- Push the union nut and clamping ring onto the pipe.
- Push Viega plug-in seat as far as it will go into the pipe.
Euro cone connections are not compatible.
- Push the free end of the plug-in seat into the connection of the pipe interrupter.
- Using the union nut, screw the pipe tightly onto the pipe interrupter.
- Repeat the procedure with the second pipe.



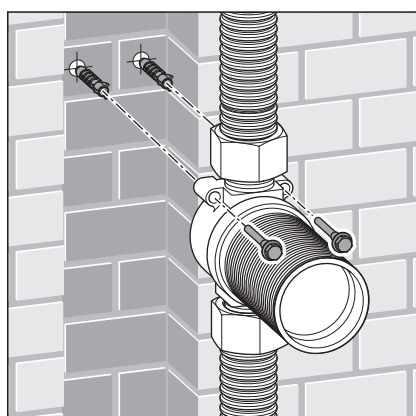
INFO! We show the mounting here with the Viega plug connection. Mounting can also be carried out with other connecting materials. If necessary, observe the manufacturer's instructions.

- Seal adapter elbow and twist into the connection of the mixer tap.
- Push the union nut and clamping ring onto the pipe.
- Screw in the pipe tight with the union nut onto the adapter elbow.

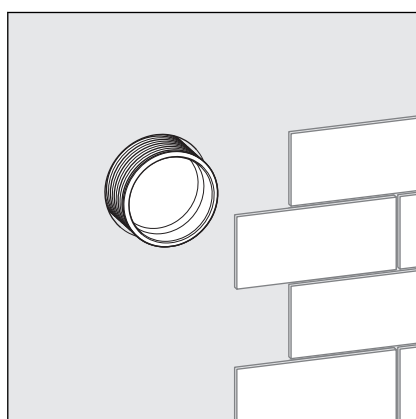
- Lay the free pipe end up to the connection place of the bathtub drain/overflow.



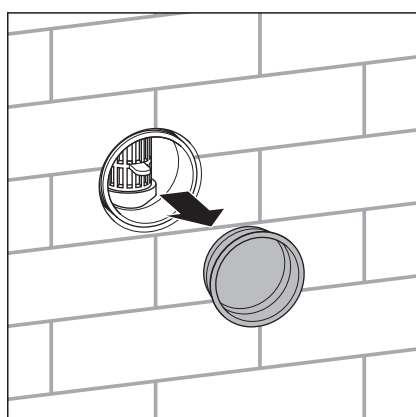
- Align pipe interrupter.
- Mark drill holes.
- Drill holes.



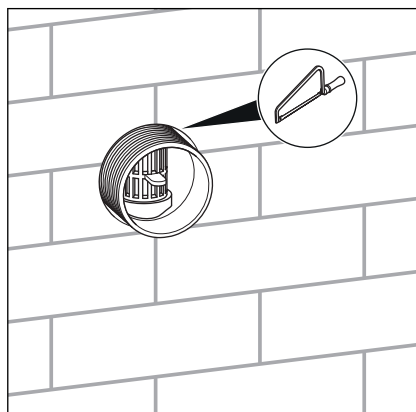
- Screw on pipe interrupter with two crossed slot screws (size 4.5 or 5).
- Encase the pipe interrupter and connection line in mortar.



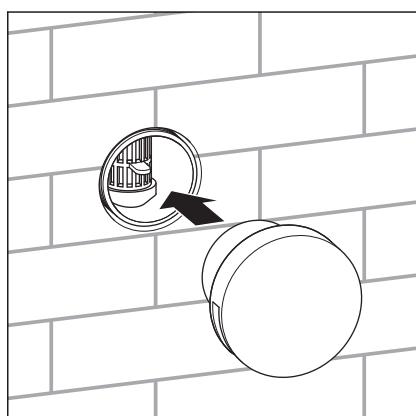
- Tile the wall.



- Remove protective plug.

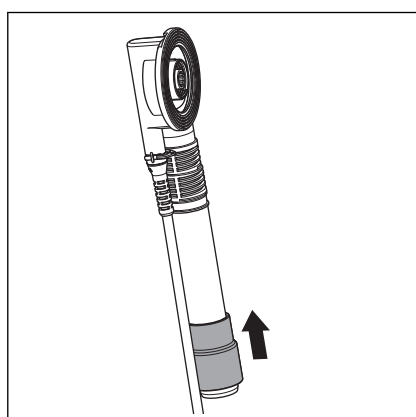


- Shorten shaft top with a fine-toothed saw.
The shaft top must be flush with the height of the tiles.
- Clean shaft top when contaminated.

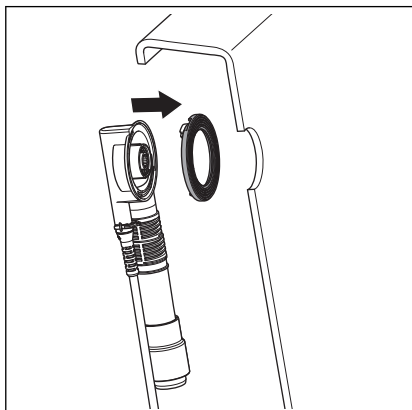


- Insert the rosette into the shaft top.

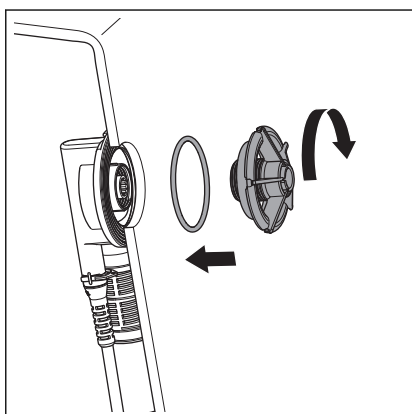
3.2.2 Mounting overflow



- Proceed as follows to the mounting of the overflow:
- Push the rubber sleeve onto the pipe of the overflow unit.
The lower edge must be flush with the edge of the overflow pipe.



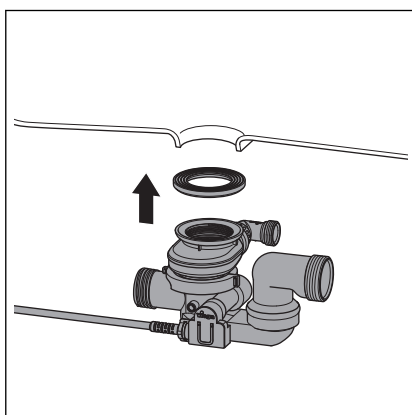
- Fit profile seal in the overflow unit.



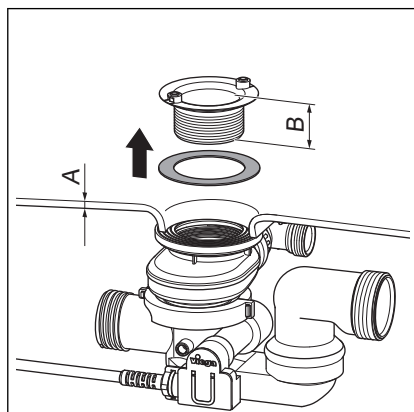
- Place the O-ring in the annular gap of the fixing flange.
- Hold the overflow unit on the overflow opening of the bathtub from the outside.
- Screw the fixing flange into the overflow unit by hand.
Pliers or other tools may damage the fixing flange. Only turn the fixing flange by hand.

3.2.3 Mounting the drain

Proceed as follows to mount the drain:



- Place the profile seal in the recess of the drain unit.
- Mount the drain unit with profile seal on the drain opening of the bathtub from below.

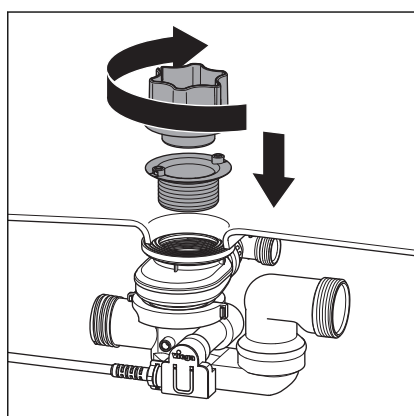


- Select suitable valve top:

Use the **B = 22.5 mm** high **flat** valve top for steel tubs with wall thickness **A = 2–11 mm**.

Use the **B = 30 mm** high valve top for plastic tubs with wall thickness **A = 11–16 mm**.

- Apply lubricant to the inside of the seal and place onto the underside of the valve top.



- Install the valve top into the drain unit and screw together with the mounting aid.

The mounting aid must be placed on the screw recesses with the holes on the underside.

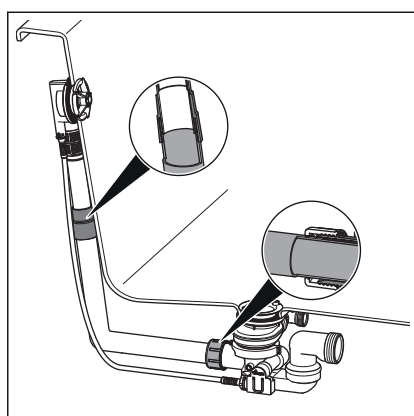
3.2.4 Connecting overflow and drain

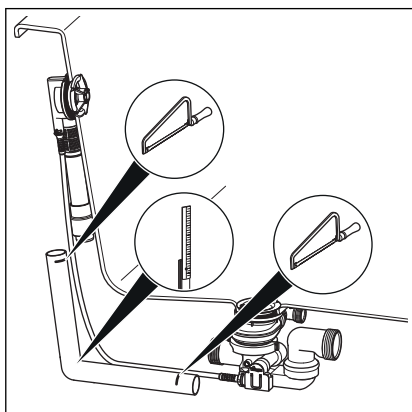
After the overflow and the drain have been mounted, you must connect them both using the overflow pipe. Proceed as follows:

Requirements:

- The overflow is mounted in the overflow opening.
- The drain is securely mounted on the base of the bathtub.

NOTICE! Connections where the pipes are not inserted far enough into each other become leaky. For this reason, maintain a minimum insertion depth of 15 mm for every connection.

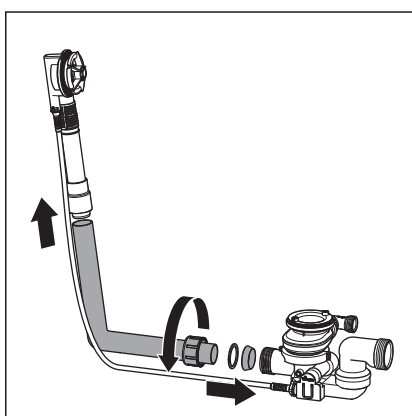




- Hold the pipe of the overflow unit parallel to the overflow pipe and mark the positions where the drain and the overflow should be connected.

Maintain an insertion depth of at least 15 mm!

- Cut the overflow pipe to the marked length and, if necessary, deburr.



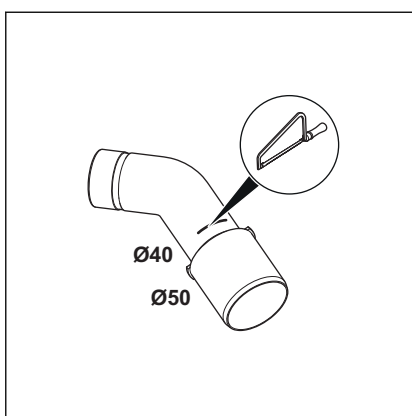
- Push the top end of the overflow pipe into the rubber sleeve.
Maintain an insertion depth of at least 15 mm!
- Push the union nut, sliding ring and seal onto the bottom end of the drain elbow.
- Screw the union nut on the drain unit.

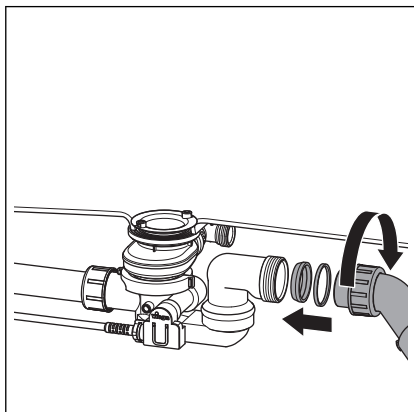
3.2.5 Connecting the wastewater system

Proceed as follows to connect the drain/overflow to the wastewater system:

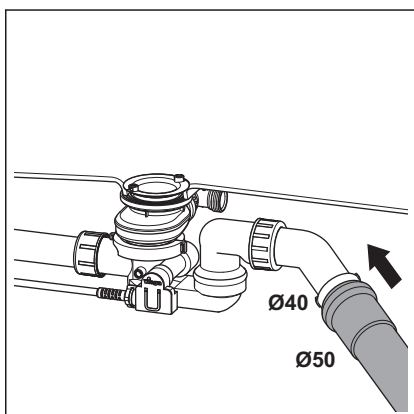
Requirements:

- The overflow and drain units are installed on the bathtub.
- The connection between overflow and drain has been made.
- If the wastewater pipe only has a diameter of 40 mm, cut off drain elbow.





- Push union nut, sliding ring and seal onto the drain elbow.
 - Screw the union nut on the drain unit.
- Maintain an insertion depth of at least 15 mm!



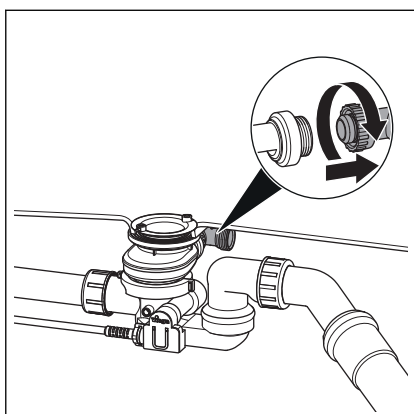
- Turn the drain at the joint until the required position has been reached.
- Push wastewater pipe in the drain elbow.

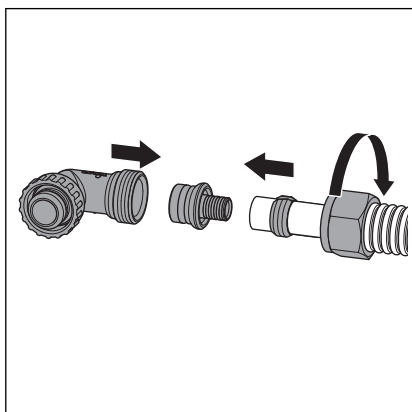
3.2.6 Connecting the inlet

Proceed as follows to connect the water inlet to the drain unit:

Requirements:

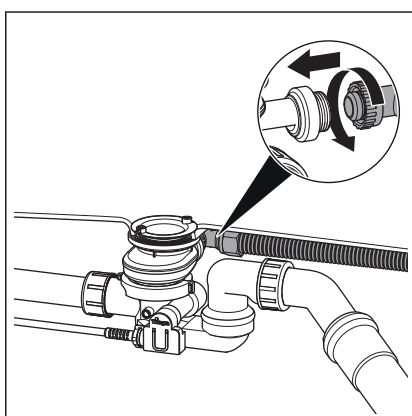
- A connection set (e. g. the pipe interrupter set) is available.
- A pipe interrupter is installed in the supply pipeline.
- Overflow and drain are mounted.
- Overflow and drain are connected.
- The connection to the wastewater system has been made.
- Remove the union nut of the connection elbow from the drain unit and remove connection elbow.





INFO! We show the mounting here with the Viega plug connection. Mounting can also be carried out with other connecting materials. If necessary, observe the manufacturer's instructions.

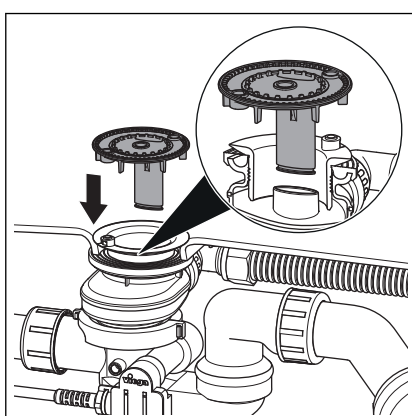
- Push union nut and clamping ring (parts of the connection set) onto the water-carrying pipe.
- Push the narrow end of the screw fitting (part of the connection set) into the pipe as far as it will go.
- Push the free end of the screw fitting into the connection elbow.
- Screw in the pipe tight with the union nut onto the connection elbow.



- Place the connection elbow onto the connection of the drain unit and tighten the union nut by hand.

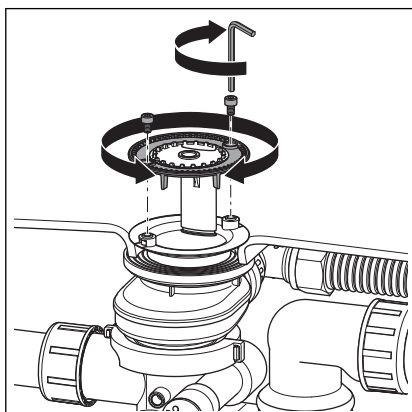
3.2.7 Mounting equipment set

To avoid damage to the rosette and valve cone, only mount the equipment set after finishing all other work on the building site. Proceed as follows:

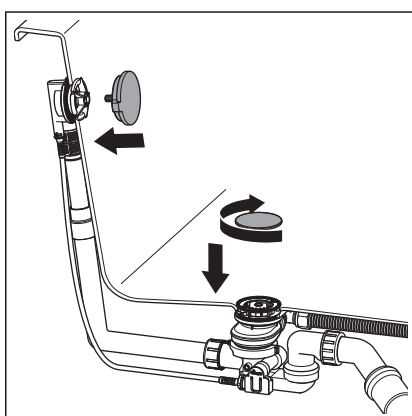


- Fit the inlet element into the drain unit.

The shaft on the side of the inlet element must be inserted into the recess in the drain unit.



- Turn the external ring of the inlet element in such a way that the screw heads of the screw-in valve is reachable.
- Fit Allen screws and tighten only gently by hand.

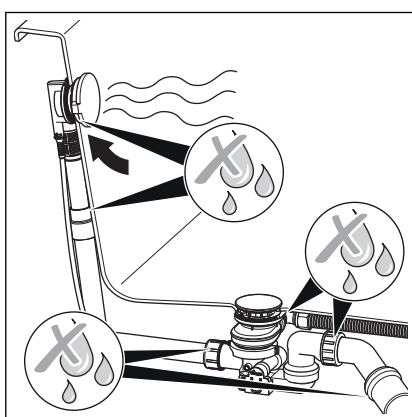


- Screw cover plate onto the drain by hand.
- Align and push in overflow rosette.

3.2.8 Leakage test

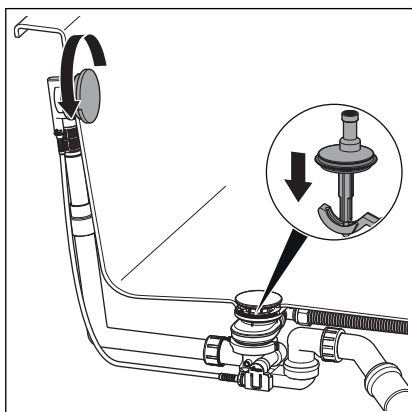
The leakage test is only carried out as a visual inspection.

- Check drain/overflow fitting for visible leaks.



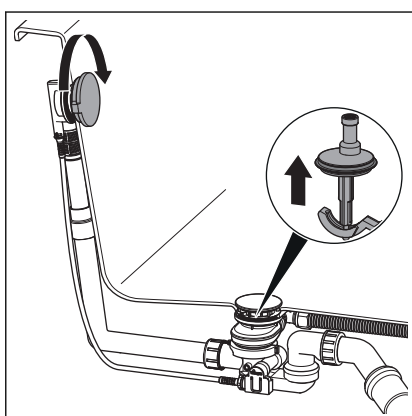
3.3 Control

The drain / overflow are controlled via the rotatable rosette on the overflow. Proceed as follows to open or close the drain:



► Turn rotatable rosette to the left.

⇒ The drain closes itself.



► Turn rotatable rosette to the right.

⇒ The drain opens itself.

3.4 Simple maintenance and cleaning pipe

3.4.1 Maintenance



NOTICE!

Risk of damage due to unsuitable cleaning agent.

The following cleaning agents can damage chrome-plated surfaces and therefore may not be used:

- scouring agent
- abrasive sponges
- lime, plaster or cement dissolver
- solvents or other acidic cleaning agents

Normal soap or a mild cleaning agent can be used for regular care and prevention of lime scale on the rotatable rosette and valve cone. Under no circumstances should scouring agent or scratching objects be used.

Strong stains, even around the drain unit and the siphon, can be removed using typical household cleaner. It should be noted that the cleaning agent should be rinsed off after the prescribed soaking time. There should be no residue on the components.

3.4.2 Cleaning pipe interrupter

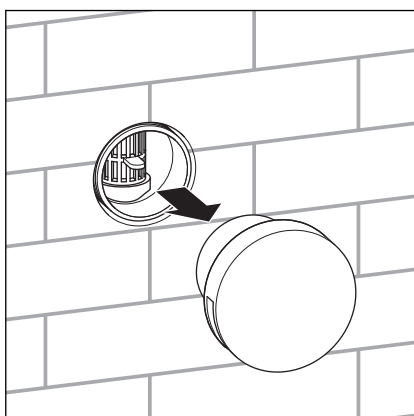
The pipe interrupter must be cleaned regularly as limescale on the membrane can be detrimental to its functionality. The cleaning interval depends from the local water and should be decided during mounting.



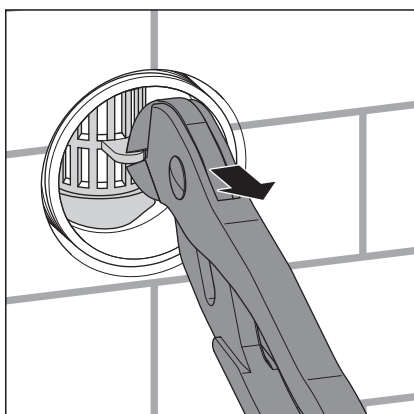
In the case of extensive contamination, the insert has to be replaced to ensure the functionality of the pipe interrupter.

Proceed as follows to clean or replace the insert with the membrane:

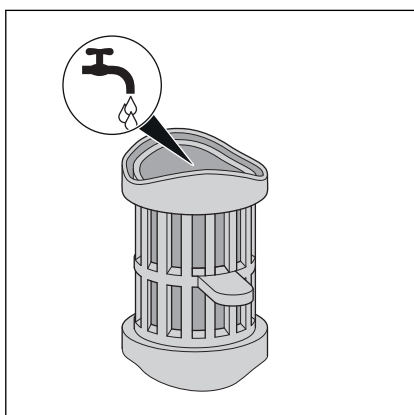
➤ Remove rosette.

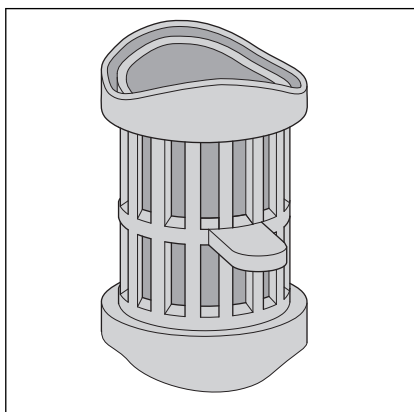


➤ Pull the insert out of the casing using multigrip pliers.

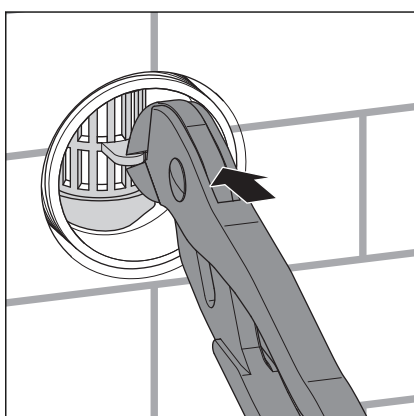


➤ If there is only a little limescale and contamination, rinse the insert carefully.

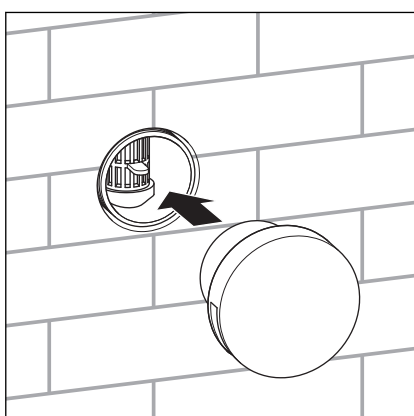




- If excessive limescale and contamination is found, use new insert (model 6161.82)



- Using multigrip pliers, insert the insert into the casing of the pipe interrupter vertically from the front.

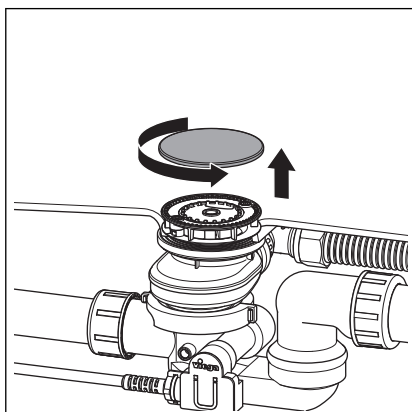


- Insert the rosette into the shaft top.

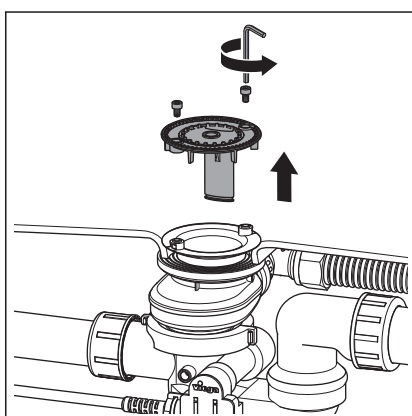
3.4.3 Cleaning the drain

The drain should be cleaned at regular intervals. The cleaning interval depends on the use of the tub installation.

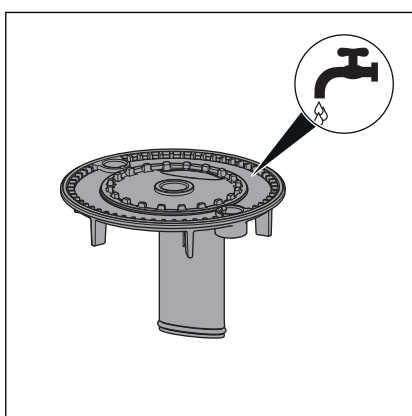
Proceed as follows to clean the drain:



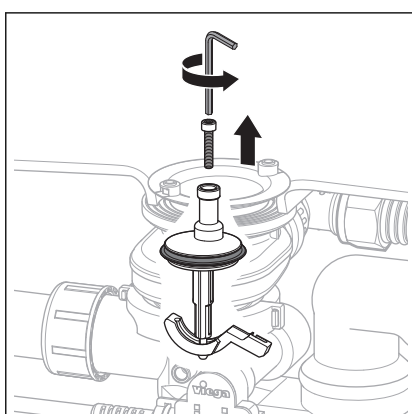
- Unscrew cover plate by hand.



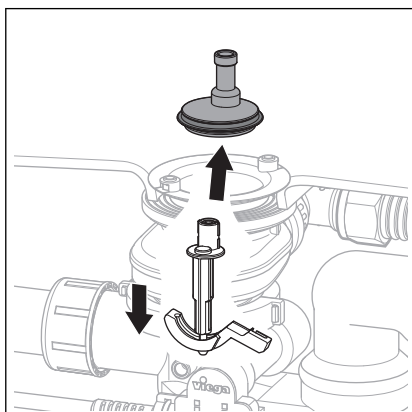
- Loosen the Allen screws of the inlet element with the Allen key (size 3).
- Remove inlet element.



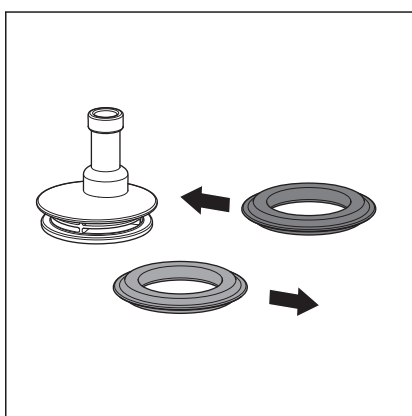
- Clean inlet element by holding it under running water.
Do not use any sharp or pointed objects when cleaning as this could damage the material.



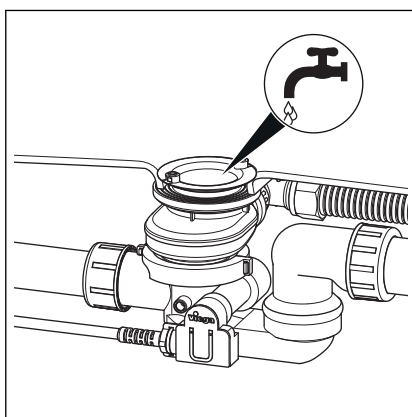
- Loosen the Allen screw of the valve cone with an Allen key (size 3).



- Close the valve cone with the rotatable rosette and retain this position.
- Remove valve cone.



- If the seal of the valve cone is damaged or has excessive limescale, remove the seal.
 - Place a new seal in the recess in the valve cone.
- Only use original replacement seals from Viega (model 6162-268), which are intended for the valve cone.



- If necessary, clean drain casing with running water and a mild cleaning agent.

INFO! Do not use any abrasive cleaner or pipe cleaner as these can damage the plastic of the drain casing.



To install, follow the same steps in reverse order.

3.5 Disposal

Separate the product and packaging materials (e. g. paper, metal, plastic or non-ferrous metals) and dispose of in accordance with valid national legal requirements.