

Order

Price enquiry

**ACO. creating
the future of drainage**



ACO ShowerDrain E⁺ - individual configuration

(with integrated diffusion vents for secondary drainage, flange with factory bonded membrane)

If you require a quotation, please fill in this two-page configuration, print and send to the following fax number or print as PDF file and send to the following email address:

Sales representative: _____

Date: _____

Object (no., name, location): _____

**ACO Haustechnik
Intercompany Business
Email: icb-haustechnik@aco.com**

Installer: _____

Dealer/contact partner: _____

Street: _____ City: _____

Handling code/document no.: _____

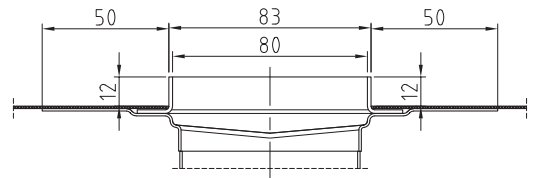
Tel.: _____ Email: _____

Tel.: _____ Email: _____

1. Height of the tile frame (H) (indications installation height)

for tiles
(Standard frame height H = 12 mm)

for natural stone with frame height H = mm
(max. H = 35 mm)



2. Socket inclination gully bodies (height indications apply to standard frame height H = 12 mm)

<input type="radio"/>		<p>Vertical outlet (90° inclination) Water seal = 50 mm, ND 50 Installation height H_{UFL}: 15 - 140 mm (Unfinished Floor Level)</p>	
<input type="radio"/>		<p>Horizontal outlet (1,5° inclination) Water seal = 50 mm, ND 50 Installation height H_{UFL}: 92 - 140 mm (Unfinished Floor Level)</p>	
<input type="radio"/>		<p>Horizontal outlet (1,5° inclination) Water seal = 25 mm, ND 40/50 Installation height H_{UFL}: 66 - 140 mm (Unfinished Floor Level)</p>	

3a. Room installation (min. length L = 400 mm, max. length L = 1500 mm)

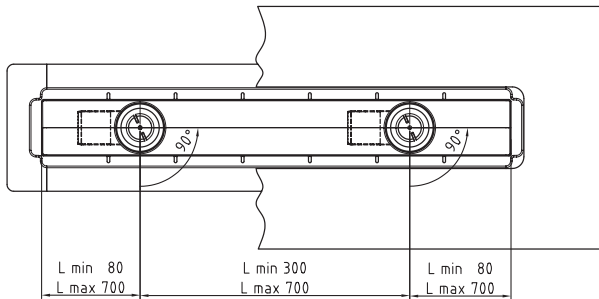
Profile		L = mm
		Surrounding flange, factory bonded membrane

3b. Wall installation (min. length L = 400 mm, max. length L = 1500 mm)

Profile		L = mm
		Wall flange, factory bonded membrane

4. Number and position of drain bodies (max. length = 1500 mm, standard width = 84 mm)

Min./max. length indications, also applies to vertical design:



For drain values as per EN 1253-1, the max. flow distance of water may NOT exceed 700 mm.

The socket position indication is made anticlockwise.

With rear wall edging, NO socket outlet possible in wall edging direction.

	S1 = °		L3 = mm L4 = mm S1 = °
	L3 = mm L4 = mm L5 = mm S1 = ° S2 = °		L3 = mm L4 = mm L5 = mm L6 = mm S1 = ° S2 = ° S3 = °

5. Design gratings (depending on overall length, two-part gratings are possible)

If a different frame height (refer to item 1) is selected, the chosen stainless steel design grating is adjusted in its height automatically, except for Floor, Twist and Stripe.

*capable of tiling, standard = 10 mm

Signature on design grating (except Tile):